

FULL TEXT LINKS



[Cancers \(Basel\)](#). 2023 Mar 4;15(5):1605. doi: 10.3390/cancers15051605.

Lenalidomide Maintenance and Measurable Residual Disease in a Real-World Multiple Myeloma Transplanted Population Receiving Different Treatment Strategies Guided by Access to Novel Drugs in Brazil

[Anna Beatriz Dos Santos Salgado](#)^{1 2}, [Roberto Jose Pessoa Magalhães](#)², [Robéria M Pontes](#)^{3 4}, [Eduarda da Silva Barbosa](#)^{1 5}, [Juan Flores-Montero](#)^{6 7}, [Luzalba Sanoja-Flores](#)^{8 9}, [Marcelo Gerardin Poirot Land](#)^{1 5}, [Glicinia Pimenta](#)², [Hélio Dos Santos Dutra](#)¹⁰, [Elaine S Costa](#)^{1 5}, [Alberto Orfao](#)^{6 7}, [Angelo Maiolino](#)^{1 2 11}

Affiliations

PMID: 36900396 PMID: [PMC10000507](#) DOI: [10.3390/cancers15051605](#)

Abstract

Despite recent advances in multiple myeloma (MM), the incorporation of novel agents and measurable residual disease (MRD) monitoring in low-income countries remains a challenge. Although lenalidomide maintenance (M-Len) after autologous stem cell transplantation (ASCT) has been associated with improved outcomes and MRD has refined the prognosis of complete response (CR) cases, until now, there have been no data on the benefits of these approaches in Latin America. Here, we evaluate the benefits of M-Len and MRD using next-generation flow cytometry (NGF-MRD) at Day + 100 post-ASCT ($n = 53$). After ASCT, responses were evaluated based on the International Myeloma Working Group criteria and NGF-MRD. MRD was positive in 60% of patients with a median progression-free survival (PFS) of 31 months vs. not reached (NR) for MRD-negative cases ($p = 0.05$). The patients who received M-Len continuously had a significantly better PFS and overall survival (OS) than those without M-Len (median PFS: NR vs. 29 months, $p = 0.007$), with progression in 11% vs. 54% of cases after a median follow-up of 34 months, respectively. In a multivariate analysis, MRD status and M-Len therapy emerged as independent predictors of PFS (median PFS of M-Len/MRD⁻ vs. no M-Len/MRD⁺ of NR vs. 35 months, respectively; $p = 0.01$). In summary, M-Len was associated with improved survival outcomes in our real-world MM cohort in Brazil, with MRD emerging as a useful reproducible tool to identify patients at an earlier risk of relapse. The inequity in drug access remains a hurdle in countries with financial constraints, with a negative impact on MM survival.

Keywords: autologous transplant; drug access; lenalidomide; maintenance; measurable residual disease; multiple myeloma; real-world study.

[PubMed Disclaimer](#)

Figures

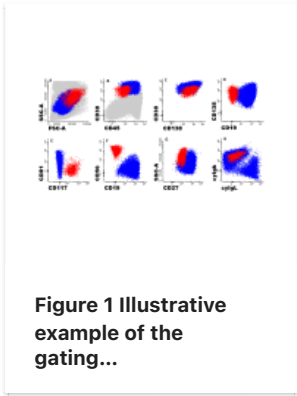


Figure 1 Illustrative example of the gating...

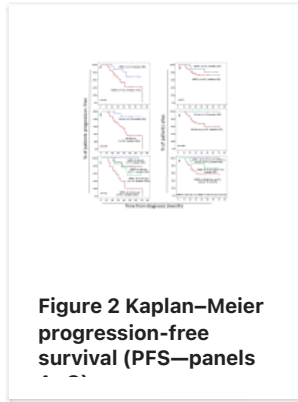


Figure 2 Kaplan–Meier progression-free survival (PFS—panels...

Related information

[MedGen](#)

LinkOut - more resources

Full Text Sources

[Europe PubMed Central](#)

[MDPI](#)

[PubMed Central](#)